

Using GIS for Valuation for Bernalillo County

Damian R. Lara/Steve Miera/Fabian Montoya

April 10, 2024



New Mexico

New Mexico is a state located in the southwestern region of the United States. It is often considered one of the states in the American Southwest, and its geography, culture, and history are closely associated with this region. Here are some key aspects of New Mexico's connection to the Southwest:

1. **Geography:** New Mexico's geography is characterized by its southwestern location. The state is known for its diverse landscapes, including deserts, high plateaus, mountains, and canyons. The Chihuahuan Desert, which extends into Mexico, covers a significant portion of southern New Mexico.
2. **Climate:** The climate in New Mexico is typical of the Southwest, with hot summers and mild winters in lower elevations and colder temperatures in the mountainous regions. The arid and semi-arid conditions are characteristic of the southwestern United States.
3. **Native American Heritage:** New Mexico has a rich Native American heritage, with numerous indigenous tribes, including Puebloan, Navajo, and Apache communities. The Pueblo people have a particularly strong presence in the state, with historic adobe villages that date back centuries.
4. **Spanish Influence:** The Spanish were among the first European settlers in the American Southwest, including New Mexico. Spanish colonization in the region left a lasting impact on the state's culture, architecture, and traditions. Many of New Mexico's cities and towns, including Santa Fe, showcase distinctive Spanish colonial architecture.
5. **Mexican Heritage:** New Mexico was part of Mexico before becoming a U.S. territory following the Mexican-American War. Mexican influences on the state's culture, cuisine, and traditions are still evident today.



Bernalillo County

Geography: Bernalillo County is situated in the central part of New Mexico and is part of the Rio Grande Valley. It covers an area of

approximately 1,167 square miles (3,022 square kilometers) and includes a diverse range of landscapes, from the Rio Grande River to high desert terrain.

2. **County Seat:** Albuquerque, the largest city in New Mexico, serves as the county seat of Bernalillo County. The county government offices, including the county courthouse, are located in Albuquerque.
3. **Population:** As of my last knowledge update in September 2021, Bernalillo County had a population of over 676,000 residents. Albuquerque, as the county's largest city, is a major population center in the state.
4. **History:** Bernalillo County has a rich history dating back to its founding in the early 19th century. It was named after the Spanish village of Bernalillo, which is now a town within the county. The area has a strong Native American, Hispanic, and Anglo cultural heritage.
5. **Economy:** The economy of Bernalillo County, particularly Albuquerque, is diverse and includes sectors such as healthcare, education, technology, government, tourism, and the arts. The presence of the University of New Mexico and Kirtland Air Force Base contributes to the local economy.
6. **Cultural Attractions:** Bernalillo County is home to a variety of cultural attractions, including museums, art galleries, theaters, and historic sites. The Albuquerque International Balloon Fiesta, one of the world's largest hot air balloon festivals, is a well-known annual event that draws visitors from around the globe.
7. **Outdoor Recreation:** The county offers numerous opportunities for outdoor recreation, with nearby access to the Sandia Mountains and the Rio Grande Bosque. Hiking, biking, skiing, and water sports are popular activities in the region.



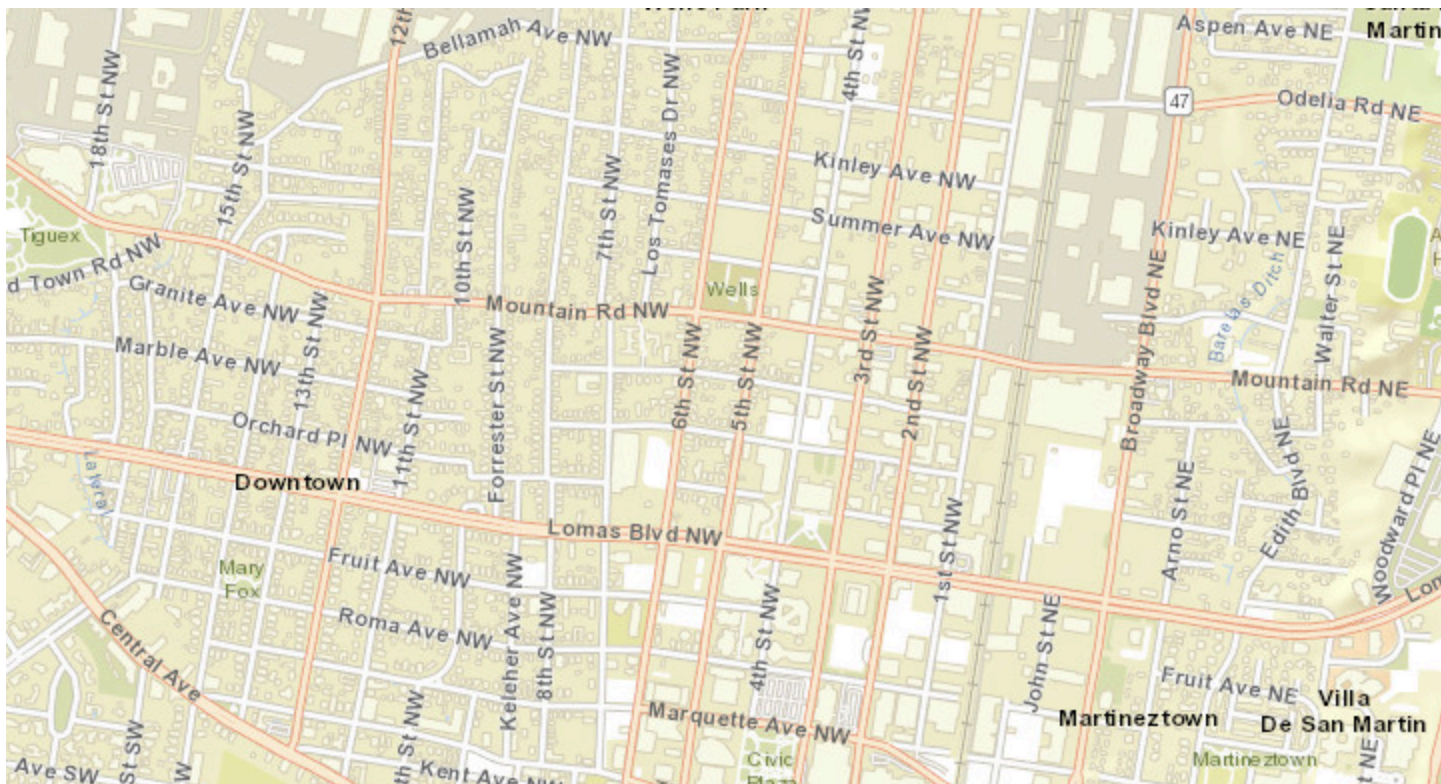
Bernalillo County, a diverse and expansive region covering 746,399.3488 acres. Within its borders, you'll find a vibrant mix of urban and rural landscapes, with the city limits spanning 120,812.7389 acres.

The Bernalillo County Assessor's Office is responsible for assessing 276,000 parcels. Around 18,000 of those parcels are commercial/industrial or classified as non-residential parcels. These parcels account for over 20 billion dollars in assessed value, and a net taxable value of 4 billion dollars. Bernalillo County reassesses values annually. To meet this task, the Assessor's Office utilizes GIS to review, update, and ensure accurate assessed values are made and maintained.



Commercial Neighborhood Map

Valuation is derived by evaluating the land and buildings, gathering building component data, sales data, as well as income and cost data and then applying applicable standards. Appraisers develop, review, analyze and complete the necessary documentation supporting the value determined.



City of Albuquerque, Bernalillo County, NM, Bureau of Land Management, Esri, HERE, Garmin, INCREMENT P, ... Powered by Esri

**Commercial Interactive
Sales Map**

Enterprise Assessment & Tax



UPC 10180562730574011



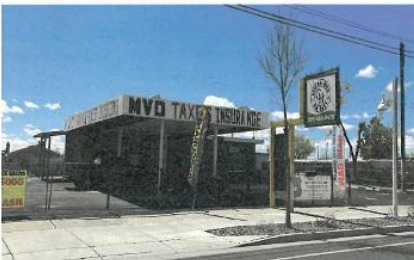
UPC 101405817320534409

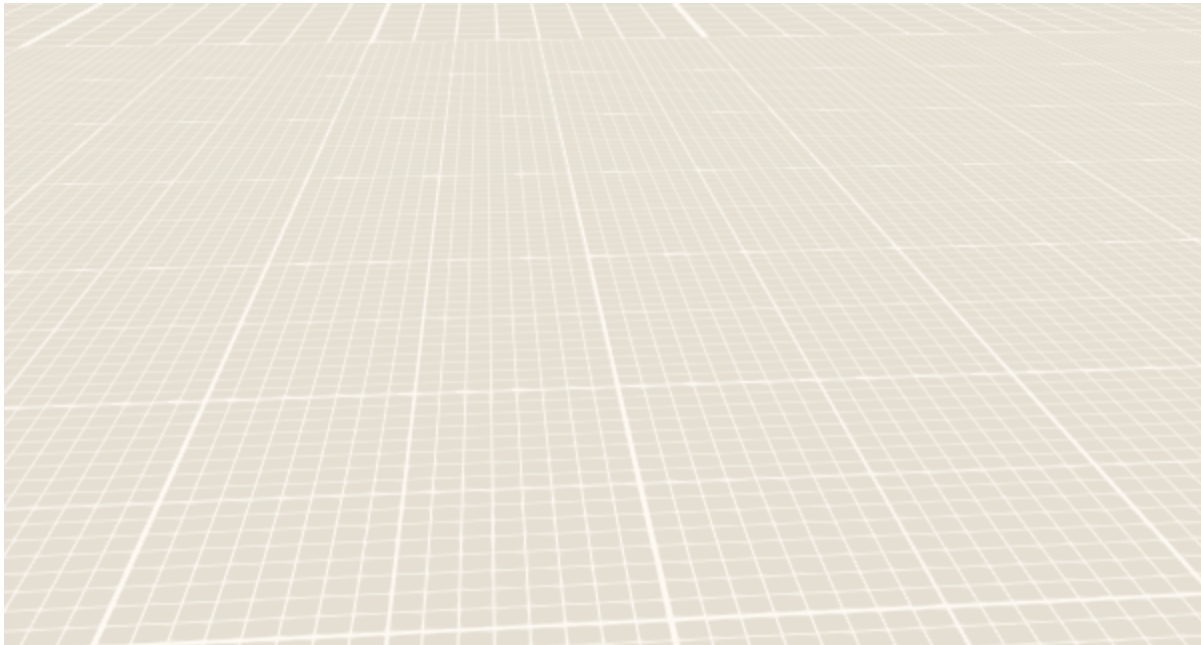


UPC 101905636952812103



UPC 101105714028932528





Powered by Esri

3D Imagery





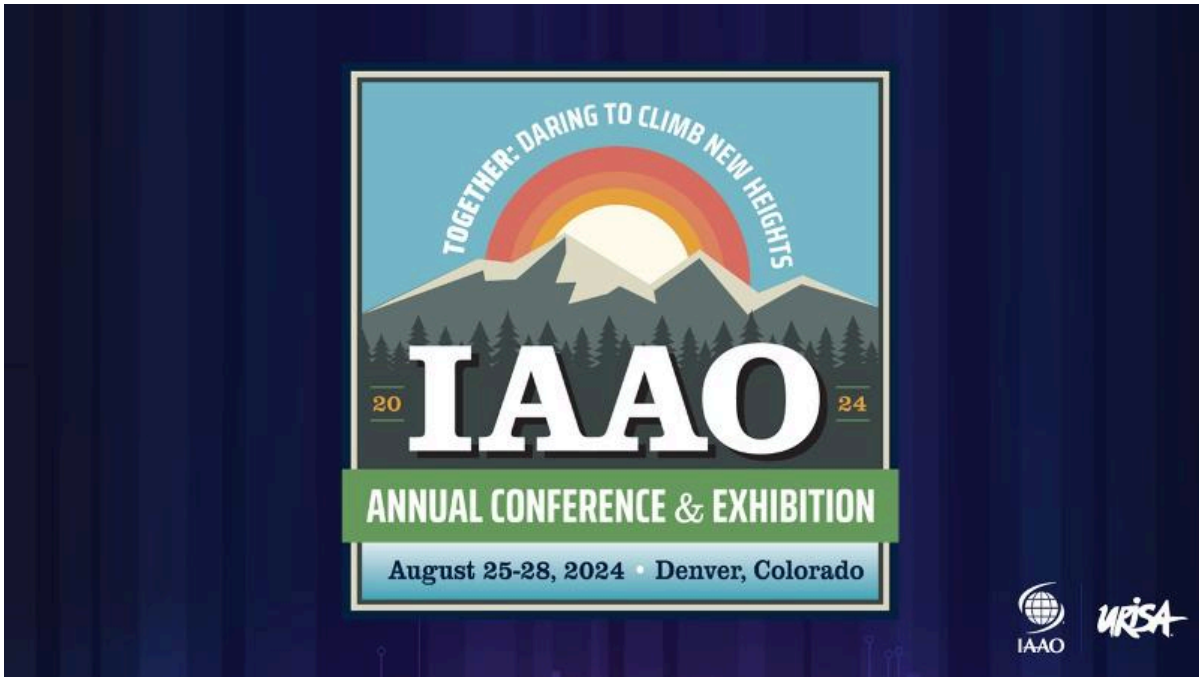
Continuing Education (CE) Credit

Recertification Credit forms for CE credit can be collected from the registration desk on Thursday

Housekeeping

- The conference proceedings will be available approximately 8 weeks after the conference
- Please silence your electronic devices
- Attendance at this conference counts toward GIS Professional (GISP) Certification and Renewal







Damian R. Lara
BERNALILLO COUNTY ASSESSOR

Office of the County Assessor
Damian R. Lara
415 Silver Ave. SW, 3rd Floor
Albuquerque, NM 87102

PHONE
505.222.3721
CELL
505.980.0320
EMAIL
dlara@bernco.gov



Steve Miera
G.I.S. MANAGER

Office of the County Assessor
Damian R. Lara
415 Silver Ave. SW, 3rd Floor
Albuquerque, NM 87102

PHONE
505.222.3704
CELL
505.288.7577
EMAIL
smiera@bernco.gov



Fablan Montoya
CHIEF APPRAISER

Office of the County Assessor
Damian R. Lara
415 Silver Ave. SW, 3rd Floor
Albuquerque, NM 87102

PHONE
505.222.3700
PHONE
505.222.3735
EMAIL
fmontoya@bernco.gov

Powered by ArcGIS StoryMaps